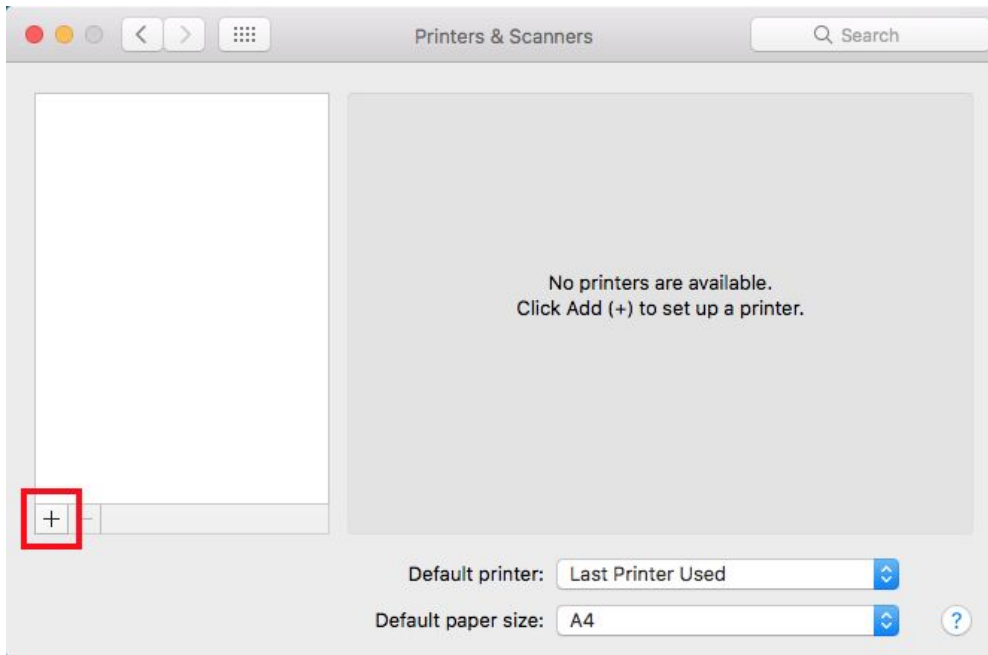


# Installation OSX printer driver

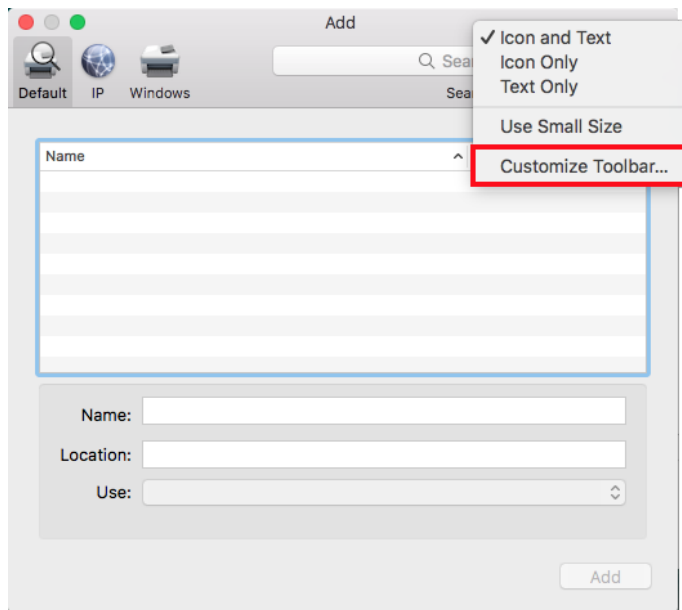
**You can only install the HVA printer when you are connected with the HVA Wifi.**

1. Download the driver (cnadv5250x1.ppd) via [Moodle](#) (or [drive](#))
2. Open System **Preferences** -> **Printers & Scanners**
3. Click on the plus-button (+) to add a new printer.

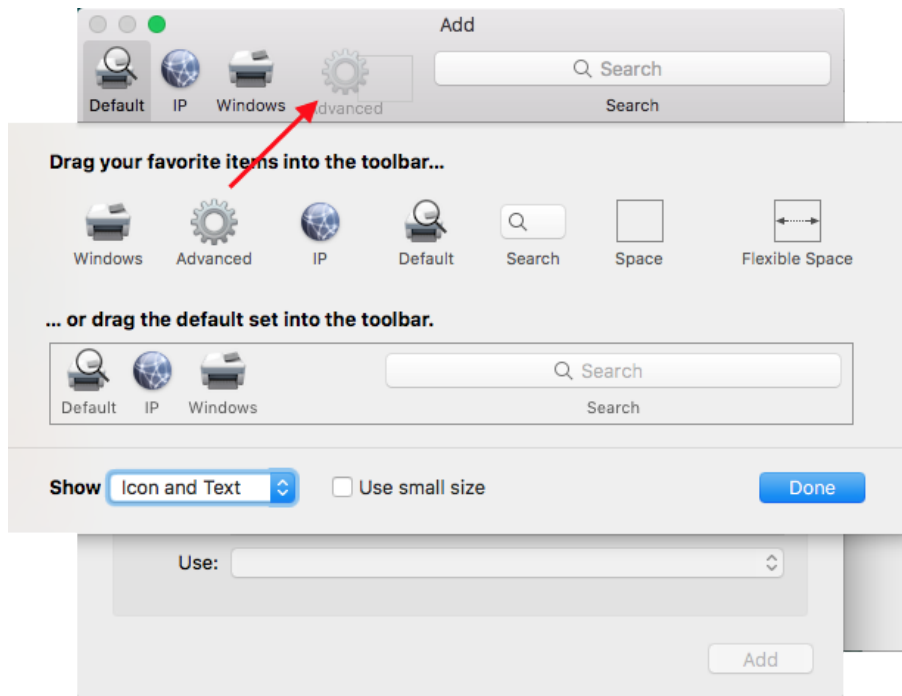


## Enable the Advanced button

1. Right-click on the menu bar and select [Customize toolbar...].



2. Drag and drop the **Advanced** icon on your toolbar
3. click [**Done**].



## Add the HvA printer

1. Click [**Advanced**].
2. Type -> **LPD/LPR Host or printer**
3. Device-> **Another device**
4. URL: **lpd://YOUR\_HVA\_ID@Canamswapp05.ps1.mycanonprint.nl/MacFollow-Me**
5. Name: **Follow-Me**
6. Loc.: **HvA**
7. Use: -> **Other...**
8. Browse and **select the 'cnadv5250x1.ppd'** file
9. [**Open**].
10. [**Add**]

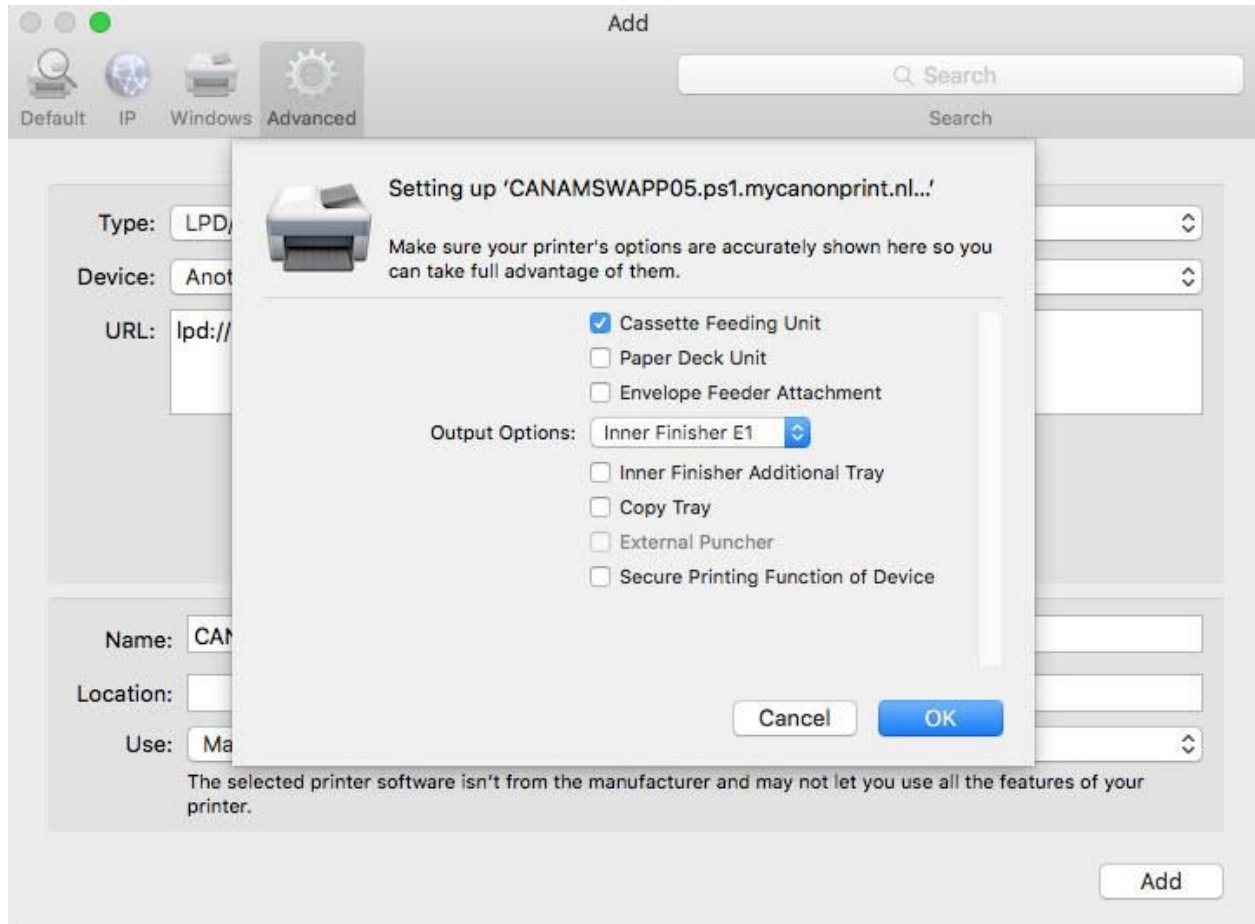
The screenshot shows a macOS 'Add' printer dialog box with the following fields and values:

- Type:** LPD/LPR Host or Printer
- Device:** Another Device
- URL:** lpd://vughe@Canamswapp05.ps1.mycanonprint.nl/MacFollow-Me
- Name:** Follow-Me
- Location:** HvA
- Use:** Auto Select

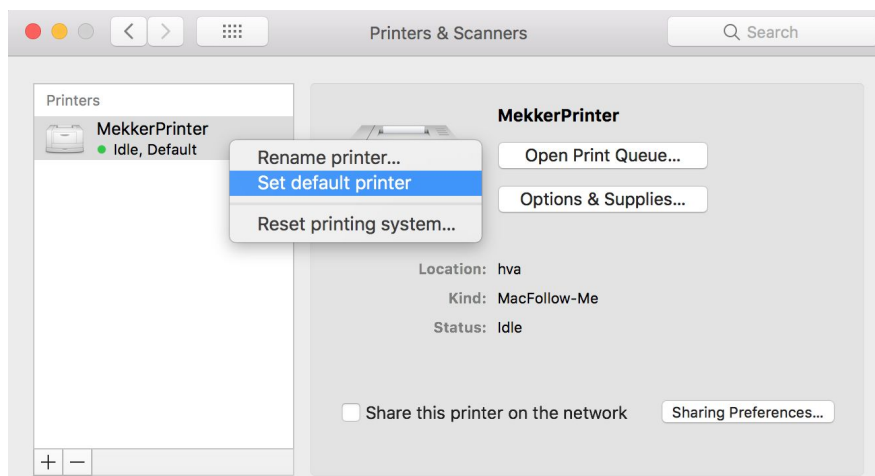
A progress indicator at the bottom left shows a spinning wheel and the text 'Gathering printer information...'. An 'Add' button is located at the bottom right of the dialog.

## Printer settings

1. Set the options as indicated below
2. [OK].

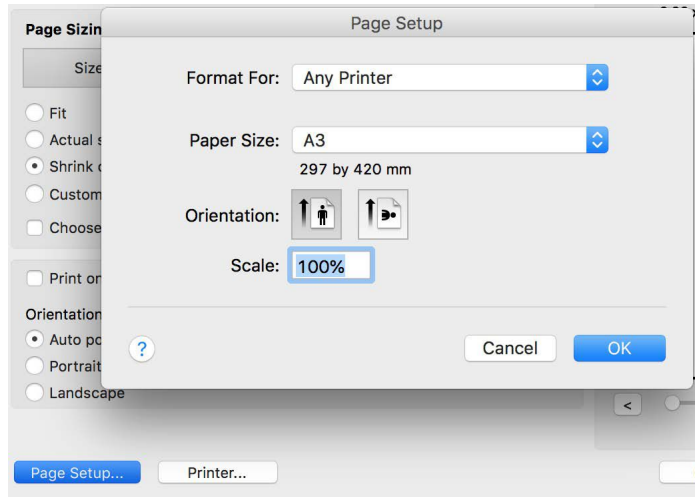


13. Set the Follow-Me as your **default printer**.



## Print A3 (in color) from Acrobat Reader or Preview

1. On your keyboard **CMD+P** (or find 'Print' in the menu)
2. **Paper size** -> **A3** (screenshot below)



3. Go to **Printer setting** -> **Color Matching** -> **In printer**.
4. **[Print]**
5. On the printer, select the print assignment and select 'Print in color'

